



We Deliver the Power™

Lex Products Corporation
15 Progress Drive
Shelton, CT 06484
203.363.3738
203.363.3742 Fax

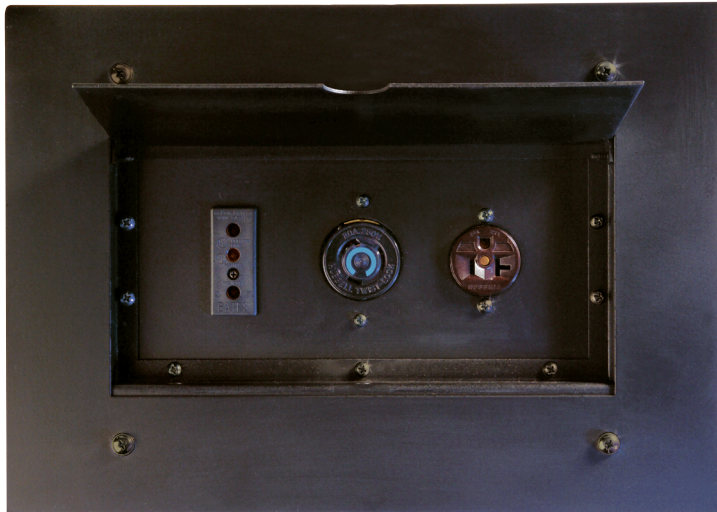
Lex West
11847 Sheldon Street
Sun Valley, CA 91352
818.768.4474
818.768.4040 Fax

www.lexproducts.com
info@lexproducts.com
800.643.4460

PowerPLUS™
Installed Distribution Boxes

Wall Pocket Outlet Boxes

In-Wall Mounted Enclosure with Hinged Cover



Features & Benefits

- *Rugged construction results in a dependable product with a long service life*
- *Cover plate is sized to mask the wall cutout*
- *Hinged cover protects the receptacles when not in use*
- *A variety of common connectors are offered to meet specific applications*



Catalog Number:

See reverse for catalog numbers and ordering information.

Description:

20 Amp, single phase, 2 pole, 3 wire in-wall mounted receptacle box with hinged cover and 20 Amp Stage Pin, 20 Amp Locking (L5-20) or 20 Amp Edison (5-20) connectors. Outputs can be either receptacles or on 18" pigtailed. Input connections are made to a molded barrier terminal strip. The outlet box is mounted in a wall and has a hinged cover.

Typical Application:

Wall pocket outlet boxes are often used backstage, or in studios as a power source for floor level lighting. Other locations may include catwalks, and lighting control booths.

Markets Served:

Theatrical, Motion Picture and Television Production, Convention Centers

Specifications

Rating	20 Amp, 1 Phase, 2 Pole, 3 Wire, 120 VAC
Environmental Rating	NEMA Type 1 Indoor
Input	Molded barrier terminal strip
Output	20 Amp Stage Pin, 20 Amp Locking (L5-20) or 20 Amp Edison. Flush.
Enclosure	16 gauge steel back box
Finish	Matte black powder coat

Wall Pocket Outlet Boxes

In-Wall Mounted Enclosure with Hinged Cover

Ordering Information:

Catalog No.	Description	Enclosure Size (L x W x D)
20A Stage Pin		
PPW-1-AA	Wall Pocket with One (1) 20A Stage Pin Receptacle	12" x 8" x 4"
PPW-2-AA	Wall Pocket with Two (2) 20A Stage Pin Receptacles	12" x 8" x 4"
PPW-3-AA	Wall Pocket with Three (3) 20A Stage Pin Receptacles	12" x 8" x 4"
PPW-4-AA	Wall Pocket with Four (4) 20A Stage Pin Receptacles	12" x 8" x 4"
PPW-5-AA	Wall Pocket with Five (5) 20A Stage Pin Receptacles	12" x 8" x 4"
PPW-6-AA	Wall Pocket with Six (6) 20A Stage Pin Receptacles	12" x 8" x 4"
20A Locking (L5-20)		
PPW-1-GA	Wall Pocket with One (1) 20A Locking Receptacles	12" x 8" x 4"
PPW-2-GA	Wall Pocket with Two (2) 20A Locking Receptacles	12" x 8" x 4"
PPW-3-GA	Wall Pocket with Three (3) 20A Locking Receptacles	12" x 8" x 4"
PPW-4-GA	Wall Pocket with Four (4) 20A Locking Receptacles	12" x 8" x 4"
20A Edison (5-20)		
PPW-1-DA	Wall Pocket with One (1) 20A Edison Receptacles	12" x 8" x 4"
PPW-2-DA	Wall Pocket with Two (2) 20A Edison Receptacles	12" x 8" x 4"
PPW-3-DA	Wall Pocket with Three (3) 20A Edison Receptacles	12" x 8" x 4"
PPW-4-DA	Wall Pocket with Four (4) 20A Edison Receptacles	12" x 8" x 4"
PPW-5-DA	Wall Pocket with Five (5) 20A Edison Receptacles	12" x 8" x 4"
PPW-6-DA	Wall Pocket with Six (6) 20A Edison Receptacles	12" x 8" x 4"



We Deliver the Power™

Lex Products Corporation
15 Progress Drive
Shelton, CT 06484
203.363.3738
203.363.3742 Fax

Lex West
11847 Sheldon Street
Sun Valley, CA 91352
818.768.4474
818.768.4040 Fax

www.lexproducts.com
info@lexproducts.com
800.643.4460

PowerPLUS™
Installed Distribution Boxes

Surface Mount Outlet Boxes

Wall Mounted Enclosure



Features & Benefits

- *Rugged construction results in a dependable product with a long service life*
- *Aluminum extrusion is inherently rustproof*
- *A variety of common connectors are offered to meet specific applications*



Specifications

Rating	20 Amp, 1 Phase, 2 Pole, 3 Wire, 120 VAC
Environmental Rating	NEMA Type 1 Indoor
Input	Molded barrier terminal strip
Output	20 Amp Stage Pin, 20 Amp Locking (L5-20) or 20 Amp Edison. Flush or 18" 12/3 SO pigtails.
Enclosure	Extruded aluminum
Finish	Matte black powder coat

Catalog Number:

See reverse for catalog numbers and ordering information.

Description:

20 Amp, single phase, 2 pole, 3 wire, surface mount receptacle box with 20 Amp Stage Pin, 20 Amp Locking (L5-20) or 20 Amp Edison (5-20) connectors. Outputs can be either receptacles or on 18" pigtails. Input connections are made to a molded barrier terminal strip. The outlet box is mounted to a wall.

Typical Application:

Surface mount outlet boxes are often used backstage, or in studios as a power source for floor level lighting. Other locations may include catwalks, and lighting control booths.

Markets Served:

Theatrical, Motion Picture and Television Production, Convention Centers

Ordering Information:

Catalog No.	Description	Enclosure Size (L x W x D)
20 Amp Stage Pin		
PPS-2-AA	Surface Mount Box with Two (2) 20 Amp Stage Pin Receptacles	6" x 4.75" x 3.375"
PPS-3-AA	Surface Mount Box with Three (3) 20 Amp Stage Pin Receptacles	8" x 4.75" x 3.375"
PPS-4-AA	Surface Mount Box with Four (4) 20 Amp Stage Pin Receptacles	10" x 4.75" x 3.375"
PPS-6-AA	Surface Mount Box with Six (6) 20 Amp Stage Pin Receptacles	14" x 4.75" x 3.375"
PPS-2-AC	Surface Mount Box with Two (2) 20 Amp Stage Pin Pigtails	6" x 4.75" x 3.375"
PPS-3-AC	Surface Mount Box with Three (3) 20 Amp Stage Pin Pigtails	8" x 4.75" x 3.375"
PPS-4-AC	Surface Mount Box with Four (4) 20 Amp Stage Pin Pigtails	10" x 4.75" x 3.375"
PPS-6-AC	Surface Mount Box with Six (6) 20 Amp Stage Pin Pigtails	14" x 4.75" x 3.375"
20 Amp Locking (L5-20)		
PPS-2-GA	Surface Mount Box with Two (2) 20 Amp Locking Receptacles	6" x 4.75" x 3.375"
PPS-3-GA	Surface Mount Box with Three (3) 20 Amp Locking Receptacles	8" x 4.75" x 3.375"
PPS-4-GA	Surface Mount Box with Four (4) 20 Amp Locking Receptacles	10" x 4.75" x 3.375"
PPS-6-GA	Surface Mount Box with Six (6) 20 Amp Locking Receptacles	14" x 4.75" x 3.375"
PPS-2-GC	Surface Mount Box with Two (2) 20 Amp Locking Pigtails	6" x 4.75" x 3.375"
PPS-3-GC	Surface Mount Box with Three (3) 20 Amp Locking Pigtails	8" x 4.75" x 3.375"
PPS-4-GC	Surface Mount Box with Four (4) 20 Amp Locking Pigtails	10" x 4.75" x 3.375"
PPS-6-GC	Surface Mount Box with Six (6) 20 Amp Locking Pigtails	14" x 4.75" x 3.375"
20 Amp Edison (5-20)		
PPS-2-DA	Surface Mount Box with Two (2) 20 Amp Edison Receptacles	6" x 4.75" x 3.375"
PPS-3-DA	Surface Mount Box with Three (3) 20 Amp Edison Receptacles	8" x 4.75" x 3.375"
PPS-4-DA	Surface Mount Box with Four (4) 20 Amp Edison Receptacles	10" x 4.75" x 3.375"
PPS-6-DA	Surface Mount Box with Six (6) 20 Amp Edison Receptacles	14" x 4.75" x 3.375"
PPS-2-DC	Surface Mount Box with Two (2) 20 Amp Edison Pigtails	6" x 4.75" x 3.375"
PPS-3-DC	Surface Mount Box with Three (3) 20 Amp Edison Pigtails	8" x 4.75" x 3.375"
PPS-4-DC	Surface Mount Box with Four (4) 20 Amp Edison Pigtails	10" x 4.75" x 3.375"
PPS-6-DC	Surface Mount Box with Six (6) 20 Amp Edison Pigtails	14" x 4.75" x 3.375"



We Deliver the Power™

Lex Products Corporation
15 Progress Drive
Shelton, CT 06484
203.363.3738
203.363.3742 Fax

Lex West
11847 Sheldon Street
Sun Valley, CA 91352
818.768.4474
818.768.4040 Fax

www.lexproducts.com
info@lexproducts.com
800.643.4460

PowerPLUS™
Installed Distribution Boxes

Recessed Mount Outlet Boxes

In-Wall Mounted Enclosure



Features & Benefits

- *Rugged construction results in a dependable product with a long service life*
- *Cover plate is sized to mask the wall cutout*
- *A variety of common connectors are offered to meet specific applications*



Catalog Number:

See reverse for catalog numbers and ordering information.

Description:

20 Amp, single phase, 2 pole, 3 wire in-wall mounted receptacle box with 20 Amp Stage pin, 20 Amp Locking (L5-20) or 20 Amp Edison (5-20) connectors. Outputs can be either receptacles or on 18" pigtails. Input connections are made to a molded barrier terminal strip. The outlet box is mounted in a recessed opening in a wall.

Typical Application:

Recessed mount outlet boxes are often used backstage, or in studios as a power source for floor level lighting. Other locations may include catwalks, and lighting control booths.

Markets Served:

Theatrical, Motion Picture and Television Production, Convention Centers

Specifications

Rating	20 Amp, 1 Phase, 2 Pole, 3 Wire, 120 VAC
Environmental Rating	NEMA Type 1 Indoor
Input	Molded barrier terminal strip
Output	20 Amp Stage Pin, 20 Amp Locking (L5-20) or 20 Amp Edison. Flush or 18" 12/3 SO pigtails.
Enclosure	16 gauge steel back box
Finish	Matte black powder coat

Ordering Information:

Catalog No.	Description	Enclosure Size (L x W x D)
20 Amp Stage Pin		
PPR-2-AA	Flush Box with Two (2) 20 Amp Stage Pin Receptacles	6" x 6" x 4"
PPR-3-AA	Flush Box with Three (3) 20 Amp Stage Pin Receptacles	8" x 6" x 4"
PPR-4-AA	Flush Box with Four (4) 20 Amp Stage Pin Receptacles	10" x 6" x 4"
PPR-6-AA	Flush Box with Six (6) 20 Amp Stage Pin Receptacles	12" x 6" x 4"
PPR-2-AC	Flush Box with Two (2) 20 Amp Stage Pin Pigtails	6" x 6" x 4"
PPR-3-AC	Flush Box with Three (3) 20 Amp Stage Pin Pigtails	8" x 6" x 4"
PPR-4-AC	Flush Box with Four (4) 20 Amp Stage Pin Pigtails	10" x 6" x 4"
PPR-6-AC	Flush Box with Six (6) 20 Amp Stage Pin Pigtails	12" x 6" x 4"
20 Amp Locking (L5-20)		
PPR-2-GA	Flush Box with Two (2) 20 Amp Locking Receptacles	6" x 6" x 4"
PPR-3-GA	Flush Box with Three (3) 20 Amp Locking Receptacles	8" x 6" x 4"
PPR-4-GA	Flush Box with Four (4) 20 Amp Locking Receptacles	10" x 6" x 4"
PPR-6-GA	Flush Box with Six (6) 20 Amp Locking Receptacles	12" x 6" x 4"
PPR-2-GC	Flush Box with Two (2) 20 Amp Locking Pigtails	6" x 6" x 4"
PPR-3-GC	Flush Box with Three (3) 20 Amp Locking Pigtails	8" x 6" x 4"
PPR-4-GC	Flush Box with four (4) 20 Amp Locking Pigtails	10" x 6" x 4"
PPR-6-GC	Flush Box with Six (6) 20 Amp Locking Pigtails	12" x 6" x 4"
20 Amp Edison (5-20)		
PPR-2-DA	Flush Box with Two (2) 20 Amp Edison Receptacles	6" x 6" x 4"
PPR-3-DA	Flush Box with Three (3) 20 Amp Edison Receptacles	8" x 6" x 4"
PPR-4-DA	Flush Box with Four (4) 20 Amp Edison Receptacles	10" x 6" x 4"
PPR-6-DA	Flush Box with Six (6) 20 Amp Edison Receptacles	12" x 6" x 4"
PPR-2-DC	Flush Box with Two (2) 20 Amp Edison Pigtails	6" x 6" x 4"
PPR-3-DC	Flush Box with Three (3) 20 Amp Edison Pigtails	8" x 6" x 4"
PPR-4-DC	Flush Box with Four (4) 20 Amp Edison Pigtails	10" x 6" x 4"
PPR-6-DC	Flush Box with Six (6) 20 Amp Edison Pigtails	12" x 6" x 4"



We Deliver the Power™

Lex Products Corporation
15 Progress Drive
Shelton, CT 06484
203.363.3738
203.363.3742 Fax

Lex West
11847 Sheldon Street
Sun Valley, CA 91352
818.768.4474
818.768.4040 Fax

www.lexproducts.com
info@lexproducts.com
800.643.4460

PowerPLUS™
Installed Distribution Boxes

Pipe Mount Outlet Boxes

Pipe Mounted Enclosure



Features & Benefits

- *Rugged construction results in a dependable product with a long service life*
- *Aluminum extrusion is inherently rustproof*
- *A variety of common connectors are offered to meet specific applications*



Catalog Number:

See reverse for catalog numbers and ordering information.

Description:

20 Amp, single phase, 2 pole, 3 wire pipe mount receptacle box with 20 Amp Stage Pin, 20 Amp Locking (L5-20) or 20 Amp Edison (5-20) connectors. Outputs can be either receptacles or on 18" pigtails. Input connections are made to a molded barrier terminal strip. The outlet box is mounted to the pipe in a pipe grid or catwalk railing.

Typical Application:

Pipe mount outlet boxes are often used backstage, or in studios as a power source for overhead lighting. Other locations may include catwalks, railings, and box booms.

Markets Served:

Theatrical, Motion Picture and Television Production, Convention Centers

Specifications

Rating	20 Amp, 1 Phase, 2 Pole, 3 Wire, 120 VAC
Environmental Rating	NEMA Type 1 Indoor
Input	Molded barrier terminal strip
Output	20 Amp Stage Pin, 20 Amp Locking (L5-20) or 20 Amp Edison. Flush or 18" 12/3 SO pigtails.
Enclosure	Extruded Aluminum
Finish	Matte black powder coat

Ordering Information:

Catalog No.	Description	Enclosure Size (L x W x D)
20 Amp Stage Pin		
PPP-2-AA	Pipe Mount Box with Two (2) 20 Amp Stage Pin Receptacles	6" x 4.75" x 3.375"
PPP-3-AA	Pipe Mount Box with Three (3) 20 Amp Stage Pin Receptacles	8" x 4.75" x 3.375"
PPP-4-AA	Pipe Mount Box with Four (4) 20 Amp Stage Pin Receptacles	10" x 4.75" x 3.375"
PPP-6-AA	Pipe Mount Box with Six (6) 20 Amp Stage Pin Receptacles	14" x 4.75" x 3.375"
PPP-2-AC	Pipe Mount Box with Two (2) 20 Amp Stage Pin Pigtails	6" x 4.75" x 3.375"
PPP-3-AC	Pipe Mount Box with Three (3) 20 Amp Stage Pin Pigtails	8" x 4.75" x 3.375"
PPP-4-AC	Pipe Mount Box with Four (4) 20 Amp Stage Pin Pigtails	10" x 4.75" x 3.375"
PPP-6-AC	Pipe Mount Box with Six (6) 20 Amp Stage Pin Pigtails	14" x 4.75" x 3.375"
20 Amp Locking (L5-20)		
PPP-2-GA	Pipe Mount Box with Two (2) 20 Amp Locking Receptacles	6" x 4.75" x 3.375"
PPP-3-GA	Pipe Mount Box with Three (3) 20 Amp Locking Receptacles	8" x 4.75" x 3.375"
PPP-4-GA	Pipe Mount Box with Four (4) 20 Amp Locking Receptacles	10" x 4.75" x 3.375"
PPP-6-GA	Pipe Mount Box with Six (6) 20 Amp Locking Receptacles	14" x 4.75" x 3.375"
PPP-2-GC	Pipe Mount Box with Two (2) 20 Amp Locking Pigtails	6" x 4.75" x 3.375"
PPP-3-GC	Pipe Mount Box with Three (3) 20 Amp Locking Pigtails	8" x 4.75" x 3.375"
PPP-4-GC	Pipe Mount Box with Four (4) 20 Amp Locking Pigtails	10" x 4.75" x 3.375"
PPP-6-GC	Pipe Mount Box with Six (6) 20 Amp Locking Pigtails	14" x 4.75" x 3.375"
20 Amp Edison (5-20)		
PPP-2-DA	Pipe Mount Box with Two (2) 20 Amp Edison Receptacles	6" x 4.75" x 3.375"
PPP-3-DA	Pipe Mount Box with Three (3) 20 Amp Edison Receptacles	8" x 4.75" x 3.375"
PPP-4-DA	Pipe Mount Box with Four (4) 20 Amp Edison Receptacles	10" x 4.75" x 3.375"
PPP-6-DA	Pipe Mount Box with Six (6) 20 Amp Edison Receptacles	14" x 4.75" x 3.375"
PPP-2-DC	Pipe Mount Box with Two (2) 20 Amp Edison Pigtails	6" x 4.75" x 3.375"
PPP-3-DC	Pipe Mount Box with Three (3) 20 Amp Edison Pigtails	8" x 4.75" x 3.375"
PPP-4-DC	Pipe Mount Box with Four (4) 20 Amp Edison Pigtails	10" x 4.75" x 3.375"
PPP-6-DC	Pipe Mount Box with Six (6) 20 Amp Edison Pigtails	14" x 4.75" x 3.375"



We Deliver the Power™

Lex Products Corporation
15 Progress Drive
Shelton, CT 06484
203.363.3738
203.363.3742 Fax

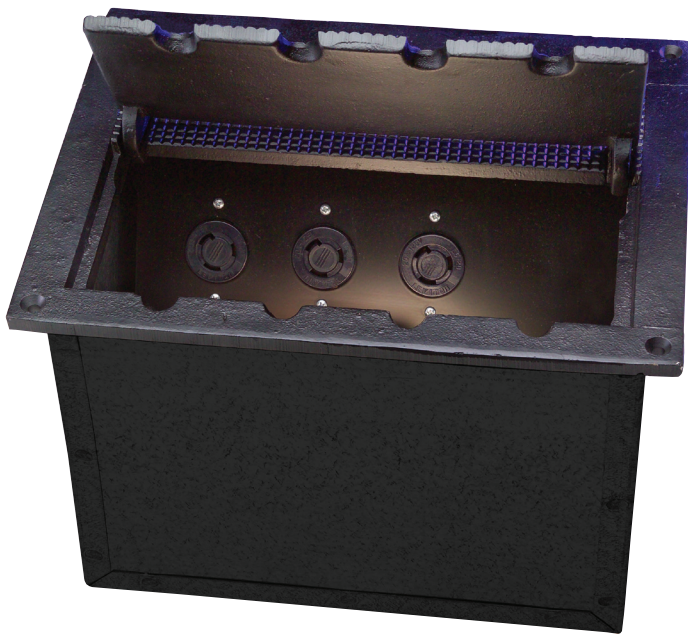
Lex West
11847 Sheldon Street
Sun Valley, CA 91352
818.768.4474
818.768.4040 Fax

www.lexproducts.com
info@lexproducts.com
800.643.4460

PowerPLUS™
Installed Distribution Boxes

Floor Pocket Outlet Boxes

Floor Mounted Enclosure with Hinged Cover



Features & Benefits

- *Rugged construction results in a dependable product with a long service life*
- *3/8" cast iron lid can withstand heavy scenery*
- *A variety of common connectors are offered to meet specific applications*



Catalog Number:

See reverse for catalog numbers and ordering information.

Description:

20 Amp, single phase, 2 pole, 3 wire in-floor mounted receptacle box with hinged cover and 20 Amp Stage Pin, 20 Amp Locking (L5-20) or 20 Amp Edison (5-20) connectors. Input connections are made to a molded barrier terminal strip. The outlet box is mounted in the floor and has a flush, hinged cover.

Typical Application:

Floor pocket outlet boxes are often used backstage for on stage side lighting.

Markets Served:

Theatrical, Motion Picture and Television Production, Convention Centers

Specifications

Rating	20 Amp, 1 Phase, 2 Pole, 3 Wire, 120 VAC
Environmental Rating	NEMA Type 1 Indoor
Input	Molded barrier terminal strip
Output	20 Amp Stage Pin, 20 Amp Locking (L5-20) or 20 Amp Edison.
Enclosure	16 gauge steel back box with hinged 3/8" cast iron lid
Finish	Matte black powder coat

Floor Pocket Outlet Boxes

Floor Mounted Enclosure with Hinged Cover

Ordering Information:

Catalog No.	Description	Enclosure Size (L x W x D)
20A Stage Pin		
PPF-2-AA	Floor Pocket with Two (2) 20A Stage Pin Receptacles	13" x 9" x 9"
PPF-3-AA	Floor Pocket with Three (3) 20A Stage Pin Receptacles	13" x 9" x 9"
PPF-4-AA	Floor Pocket with Four (4) 20A Stage Pin Receptacles	13" x 9" x 9"
20A Locking (L5-20)		
PPF-2-GA	Floor Pocket with Two (2) 20A Locking Receptacles	13" x 9" x 9"
PPF-3-GA	Floor Pocket with Three (3) 20A Locking Receptacles	13" x 9" x 9"
PPF-4-GA	Floor Pocket with Four (4) 20A Locking Receptacles	13" x 9" x 9"
20A Edison (5-20)		
PPF-2-DA	Floor Pocket with Two (2) 20A Edison Receptacles	13" x 9" x 9"
PPF-3-DA	Floor Pocket with Three (3) 20A Edison Receptacles	13" x 9" x 9"
PPF-4-DA	Floor Pocket with Four (4) 20A Edison Receptacles	13" x 9" x 9"



We Deliver the Power™

Lex Products Corporation
15 Progress Drive
Shelton, CT 06484
203.363.3738
203.363.3742 Fax

Lex West
11847 Sheldon Street
Sun Valley, CA 91352
818.768.4474
818.768.4040 Fax

www.lexproducts.com
info@lexproducts.com
800.643.4460

PowerPLUS™
Installed Distribution Boxes

Connector Strips

Extruded Aluminum Raceway



Features & Benefits

- *Wide range of connector types to suit most applications*
- *Aluminum extrusion is inherently rustproof for longer life, better appearance*
- *Rigid extrusion can't bend or flex*
- *Data option provides an integrated data and power distribution solution*
- *Pre-wired assemblies make installation fast and easy*

Specifications

Environmental Rating	NEMA Type 1 Indoor
Input	Molded barrier terminal strip. Extended junction box used for more than 20 circuits
Output	20 Amp Stage Pin, 20 Amp Locking (L5-20) or 20 Amp Edison. Flush or 18" 12/3 SO pigtails.
Enclosure	Black powder coated aluminum extrusion 4.75" H x 3.375" D
Circuit Labeling	2" white die-cut numbers standard, Lamacoid numbering option

Typical Applications

Connector strips are used overhead to distribute power and DMX512 to lighting fixtures in theaters and other places of assembly. Connector strips are often located on the suspended pipes over the stage and on pipes and catwalks over the audience.

Hanging & Mounting Solutions:

SPI (In Line Inline)

- Mount a single pipe, centered on the connector strip
- Metal bracket to secure 1-1/2" schedule 40 pipe

DPI (Double Pipe Inline)

- Mount pipes above and below the connector strip, centered on the connector strip
- Metal bracket to secure 1-1/2" schedule 40 pipe

PG (Pipe Grid) *Not Shown*

- Mount connector strip above a pipe grid
- U-bolt provided to secure 1-1/2" schedule 40 pipe

SPA (Single Pipe All-thread)

- Suspend connector strip from threaded rod
- U-bolt provided to secure 1-1/2" schedule 40 pipe



Specifications

1. General

- 1.1. Connector strips shall be provided to distribute power to stage lighting luminaires in the locations shown on the drawings.

2. Mechanical

- 2.1. Housing shall be a 3.375" x 4.75" in cross section aluminum extrusion with interlocking cover sections.
- 2.2. Aluminum extrusion shall be inherently rustproof. Connector strips constructed of formed steel will not be acceptable.
- 2.3. Connector strip shall be finished with electrostatic black paint.

3. Electrical

- 3.1. Molded barrier type terminal blocks with screw lugs shall be provided for the connection of circuits feeding the connector strip.
- 3.2. Terminal blocks shall be located within the terminal strip extrusion for up to twenty 20 Amp circuits and in an extended terminal box when the connector strip contains more than twenty-20 Amp circuits.
- 3.3. The connector strip shall be fully prewired using XLP high temperature wire rated for 125°C.
- 3.4. Terminal blocks shall be rated to accept up to #8 AWG wire.
- 3.5. Output connectors shall be [SPECIFY TYPE] 20 Amp Stage Pin receptacles [OR] NEMA L5-20 Locking receptacles [OR] NEMA 5-15 receptacles [OR] 60 Amp stage pin receptacles.
- 3.6. Output connectors shall be [SPECIFY TYPE] flush [OR] 18" pigtails.
- 3.7. [OPTION] DMX pass-thru plates shall be provided as scheduled/ shown on the drawings.

4. Labeling

- 4.1. Outlets shall be identified with 2" high die-cut circuit identification numbers on the vertical surface of the strip.
 - 4.1.1. Numbering shall be as shown on the drawings or as scheduled.

5. Mounting

- 5.1. Connector strips shall be supplied with mounting brackets manufactured from 1.5" wide 11 gauge flat bar.
- 5.2. Hangers shall be [SPECIFY TYPE] single pipe hangers [OR] double pipe hangers [OR] pipe grid hangers.
- 5.3. Brackets shall be supplied to grip up to 2" O.D. schedule 40 steel pipe.

6. Agency Approval

- 6.1. The entire assembly shall be Listed and labeled by Underwriters Laboratories for sale in the U.S.A. or Canada.
- 6.2. The connector strip shall meet or exceed UL 1573 specifications.

7. Supply

- 7.1. Connector strips shall be PowerPLUS as manufactured by Lex Products of Shelton, CT.

Markets Served

Theatrical, Motion Picture and Television Production, Convention Centers

Ordering Information

PP040-H16LI-32AA

Catalog number abbreviations and definitions:

