



The FAST M350z.

## LONG-RANGE INFRARED CAMERAS.

The FAST-TrackIR series combines the characteristics of our renown FAST-IR infrared cameras with impressive ranging capabilities. These cameras have an integrated motorized continuous zoom lens with autofocus and a focal length of up to 660 mm. They are extremely sensitive, and thus enable the detection of challenging targets.

## KEY BENEFITS

### HIGH FRAME RATE

High performance electronics produce thermal images at rates of up to 355 fps. Sub-windows can even be acquired at rates higher than 4 980 fps, depending on the model.

### HIGH-SPEED INTERNAL MEMORY

1 GB internal memory procures reliable recording. An optional upgrade up to 32 GB will provide even more autonomy.

### HIGH SENSITIVITY

Temperature differences as small as 20 mK are detectable.

### ADVANCED CALIBRATION

Unique proprietary real-time processing of infrared images including NUC, radiometric temperature, automated exposure control (AEC) and enhanced high-dynamic-range imaging (EHDRI). With these unique features, scientists benefit from ease of use and operation flexibility while getting accurate measurements over the entire camera's operation range.

## EXAMPLES OF TYPICAL USES

Surveillance



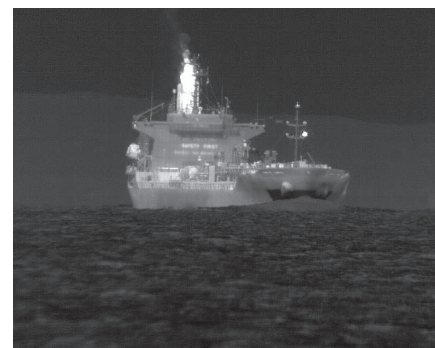
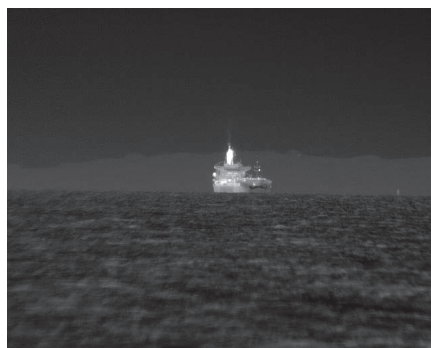
Target ranging



FAST-TrackIR Series.		
SPECIFICATIONS	FAST M350z	FAST M351z
DETECTOR TYPE	Cooled InSb	
SPECTRAL RANGE	3.6 $\mu\text{m}$ to 4.9 $\mu\text{m}$ (opt.: 3 $\mu\text{m}$ to 5.4 $\mu\text{m}$ )	
SPATIAL RESOLUTION	640 $\times$ 512 pixels	
DETECTOR PITCH	15 $\mu\text{m}$	
OPTICAL APERTURE	F/4	
FILTER WHEEL	No	Standard 4-position
MAXIMUM FRAME RATE (FULL WINDOW)	355 Hz	
MAXIMUM FRAME RATE (SUBWINDOW)	672 Hz @ 320 $\times$ 256 4 980 Hz @ 132 $\times$ 4	
TYPICAL NETD	25 mK	
NFOV	0.83° $\times$ 0.66°	
WFOV	18.2° $\times$ 14.6°	
MIN. EXPOSURE TIME	0.5 $\mu\text{s}$ to full frame rate	
LENS MOUNT	Bayonet interface	

Specifications are subject to change without notice. Other configurations are available upon request.

OTHER SPECS & FEATURES	
Rotary-stirling closed cycle sensor cooling	Gig-E
Blackbody-free permanent calibration (up to 150 °C)	Camera Link
16 bits dynamic range	Trigger In, Trigger Out
High-speed internal memory buffer: up to 32 GB (optional)	SDI, GPS, IRIG-B, RS232 and thermistor ports
Automatic exposure control (AEC)	Weight: 13.2 kg (for M350z/M200z)
Enhanced high-dynamic-range imaging (EHDMI)	Size: 20.4" $\times$ 8.9" $\times$ 7.9" 520 mm $\times$ 225 mm $\times$ 200 mm



Cargo ship (size 145 m  $\times$  24 m) 6 km from the shore

FOR MORE INFORMATION | [TELOPS.COM](http://TELOPS.COM)

**TELOPS HEADQUARTERS**  
[contact@telops.com](mailto:contact@telops.com)  
 Tel.: +1 (418) 864-7808

**TELOPS USA**  
[vince.morton@telops.com](mailto:vince.morton@telops.com)  
 Tel.: +1 (831) 419-7507

**TELOPS EUROPE**  
[eric.guyot@telops.com](mailto:eric.guyot@telops.com)  
 Tel.: +33 1 70 27 71 34

**TELOPS CHINA**  
[luoyi@telops.com](mailto:luoyi@telops.com)  
 Tel.: +86 139 1065 8965